



80 TBP ESCORT TUG

The vessel is designed to carry out ship assisting duties at offshore terminals, escorting, push-pull and coastal towing. The performance of the tug meets the requirements for high speed escorting duties. The vessel is highly manoeuvrable with FiFi

capability (2400 m³/h), suitable for operation 200 nm from the coast and fitted with a steerable thruster propulsion system. The vessel design includes a modular propulsion concept, allowing for various engine arrangements within the same basic design. ■ ■ ■

MAIN DATA

Bollard pull 80 tonnes
 Speedabt. 14 knots
 Length over all 35.40 m

■ ■ ■ MAIN DIMENSIONS

Length, o.a.	35.40 m
Length p.p.	27.89 m
Breadth	14.00 m
Depth moulded (min.)	6.65 m
Frame spacing	0.60 m
Design draught	4.60 m
Deadweight design	abt. 260 ton
Cruising range	4000 nm
Steering force	abt. 100 tonnes @ 10 knots

TRIAL SPEED

Speed	abt. 14 knots
-------------	---------------

CAPACITIES

Fuel oil	abt. 295 m ³
Ballast water	abt. 175 m ³
Freshwater	abt. 55 m ³
Lub. oil	abt. 12 m ³
Hydr. oil	abt. 7 m ³
Oily water	abt. 4 m ³
Waste oil	abt. 6 m ³
Sewage/sludge	abt. 4 m ³
Foam option	- m ³
Fifi	2400 m ³ /h

DECK EQUIPMENT

Towing/anchor winch forward with 2 x 200 m towing ropes	
Pulling force	112 ton (middle drum)
Holding brake	250 ton
Towing winch aft incl. spooling device with 1000 m wire	
Pulling force	91 ton (middle drum)
Holding brake	300 ton
Towing hook SWL 100 ton	Optional
Sternroller	Optional
Deck crane 113.8 kNm	Standard
Capstan	5 ton
Tugger winch	Optional
Towing pins for installation on the bow	Standard
Fork and towing pins for installation on the stern	Optional

MOB boat

One (1) MOB boat with outboard engine. Launching and retrieval in accordance with regulations.

Life rafts

Life rafts on each side, capacities and equipment according to regulations.

CLASS

The vessel including the machinery and equipment shall be fully classed under e.g Det Norske Veritas with the notation +1A1, TUG, E0, Fire Fighting I, ESCORT.

MACHINERY AND PROPULSION

Main Engines	2 x Wärtsilä 8L26
Output	2600 kW / 1000 rpm
Thrusters	2 x Wärtsilä CS275-S/WN-K with 2600 mm diameter HR-nozzle
Aux Genset	2 x Caterpillar C9
Output	200kWe / 1800 rpm

ALTERNATIVE MACHINERY AND PROPULSION

Main engines	2 x Wärtsilä 9L20
Output	1800 kW/ 1000 rpm
Thrusters	2 x Wärtsilä CS300-S/WN-K with 3000 mm diameter HR-nozzle
Motor (PTI)	2 x 1000 kW / 1000 rpm
Propulsion genset	1 x Wärtsilä 6L20
Output	1140 kWe / 1000 rpm @ 50 Hz 1055 kWe / 900 rpm @ 60 Hz
Aux Genset	1 x Caterpillar C
Output	76 kWe / 1800 rpm

ACCOMMODATION

The vessel has accommodation for 8 persons in total:

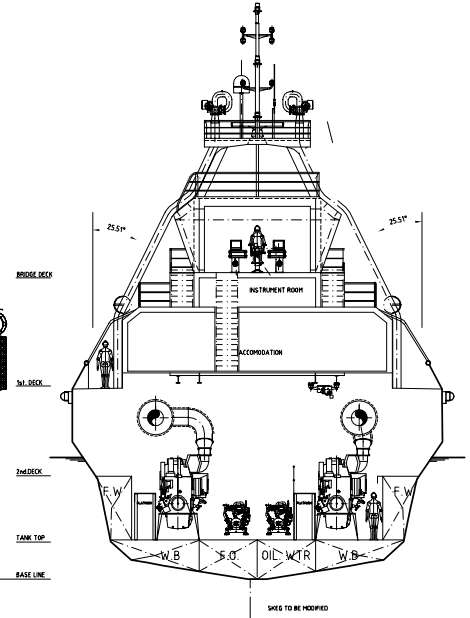
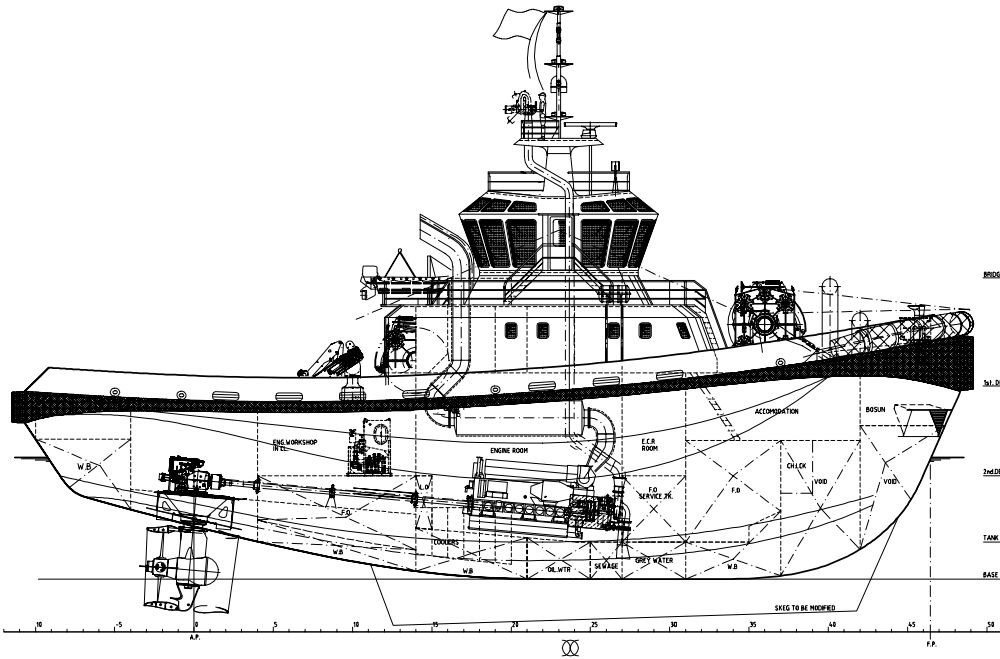
Two state cabins for the captain and chief with separate toilet

Three 2 men cabins with separate toilet

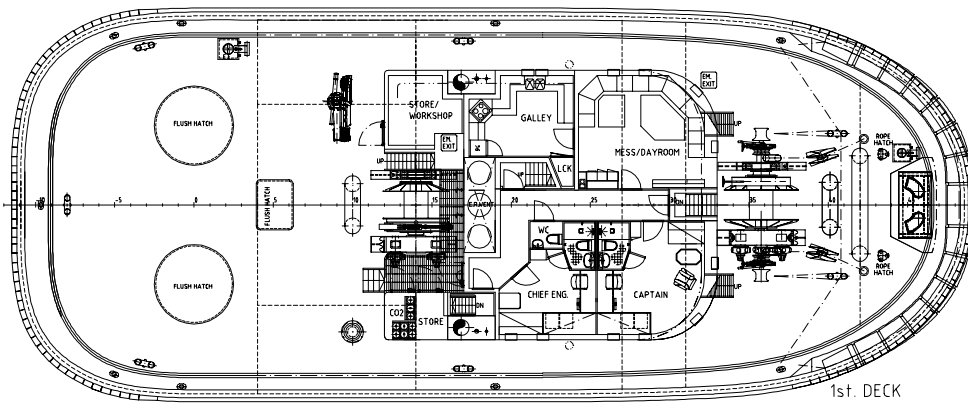
One galley

One combined mess room and day room

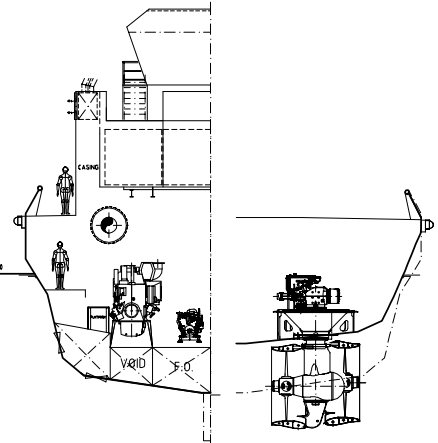
Laundry room, lockers and provision room as shown on GA plan.



SECTION FRAME 24

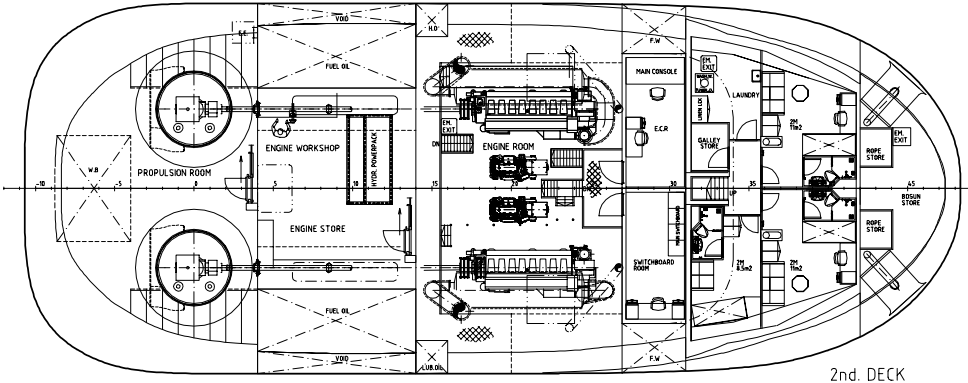


1st. DECK

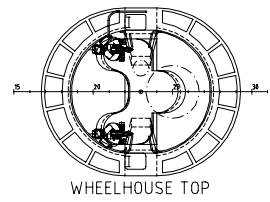


SECTION FRAME 17

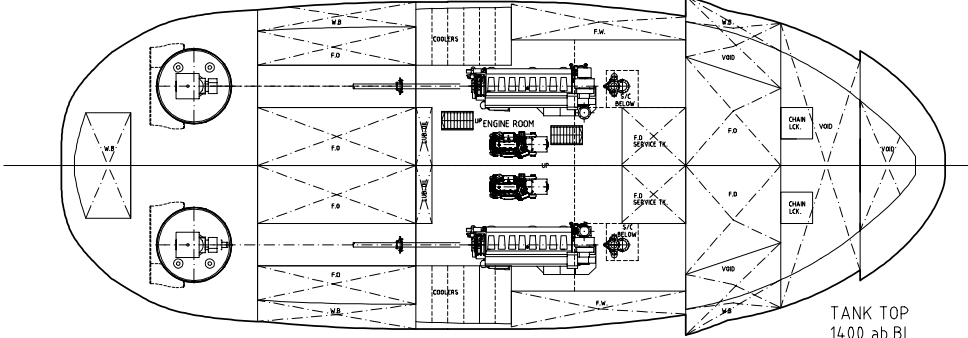
SECTION FRAME 0



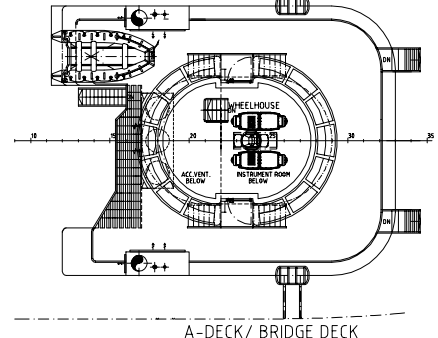
2nd. DECK



WHEELHOUSE TOP



TANK TOP
1400 ab.BL



A-DECK / BRIDGE DECK

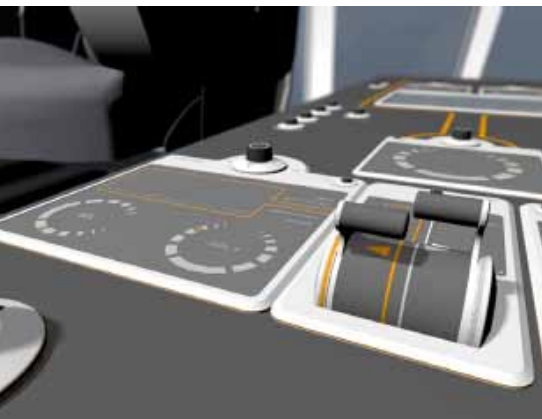
PRINCIPAL PARTICULARS:

CAPACITIES

Class: DnV
+1A1, ESCORT, UNRESTRICTED, Fi-Fi 1 waterspray.

A1 - BASIC PROP.CONFIG, BASIC OUTFIT, THRUSTER UNITS CS275.





E-mail for info: shipdesign.norway@wartsila.com

WÄRTSILÄ® is a registered trademark. Copyright © 2010 Wärtsilä Corporation.



WARTSILA.COM