

ENERGY
ENVIRONMENT
ECONOMY

MAIN DATA

Bollard pull	60 tonnes
Speed	12.5 knots
Length over all	29.50 m

60 TBP HARBOUR TUG

The basic operations of the vessel are as follows: To assist in the berthing and unberthing operations of vessels. To perform towing and ship handling operations. To carry out fire fighting operations.



MAIN DIMENSIONS

Length, o.a.	29.50 m
Length w.l.....	28.40 m
Beam mld.....	11.60 m
Depth moulded	5.53 m
Design draught	3.83 m
Navigational draught	5.65 m

CALCULATED TRIAL SPEED

Speed	12.5 knots
-------------	------------

CAPACITIES

Fuel oil	abt. 145 m ³
Ballast water.....	abt. 65 m ³
Freshwater:	abt. 35 m ³
Lub. oil.....	abt. 7 m ³
Waste oil	abt. 7 m ³
Foam	abt. 7 m ³

DECK EQUIPMENT

Towing/anchor winch forward	
Pulling force	3 ton (middle drum)
Holding brake	150 ton
Towing hook	Optional

Life rafts

Two life rafts, cap. 10 men, and equipment according to regulations.

CLASS

The vessel including machinery and equipment shall be fully classed under e.g. Det Norske Veritas (DNV) with the notation +1A1, TUG, E0, Fire Fighting 1, or adequate.

MACHINERY AND PROPULSION

Main Engines.....	2 x Wärtsilä W9L20LF
Output.....	1800 kW / 1000 rpm
Thrusters (2600 dia)	2 x Wärtsilä FS250-S/WN
Genset, Cat C6.6	2 x 170 kW/ 1800 rpm

ACCOMMODATION

The vessel has accommodation for 6 persons in total:

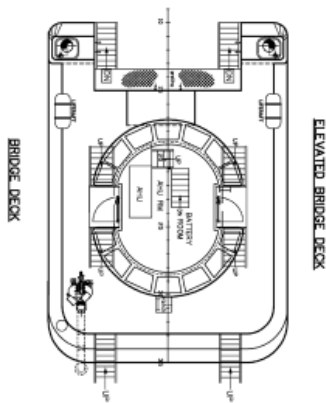
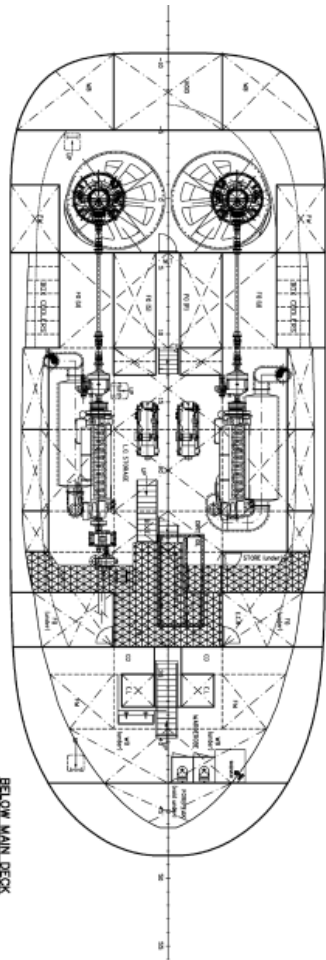
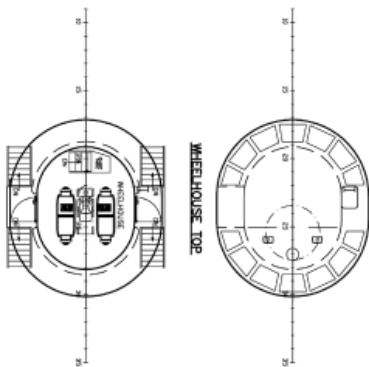
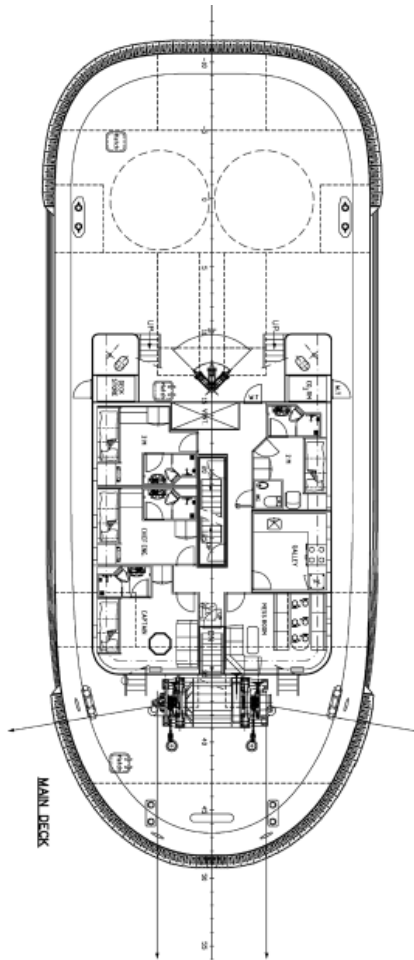
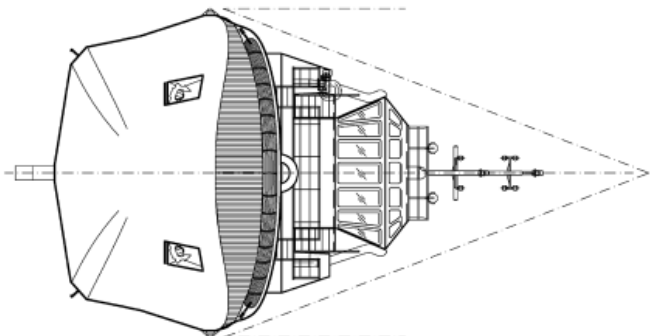
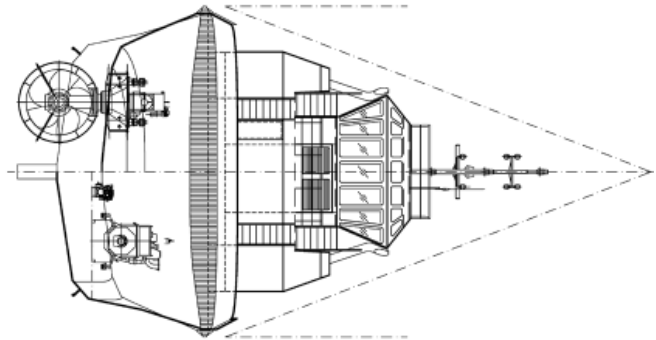
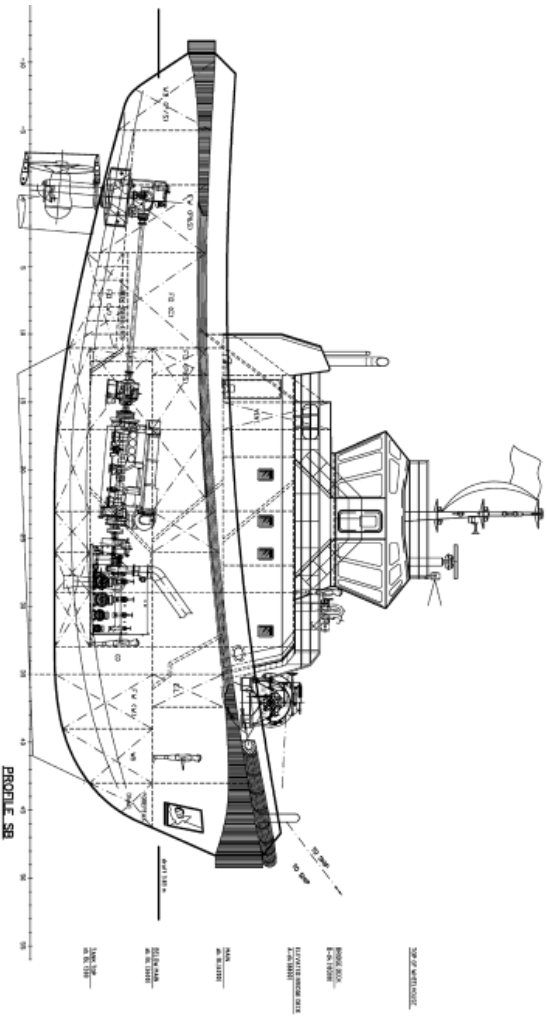
One state cabin for the captain, and one for the chief engineer

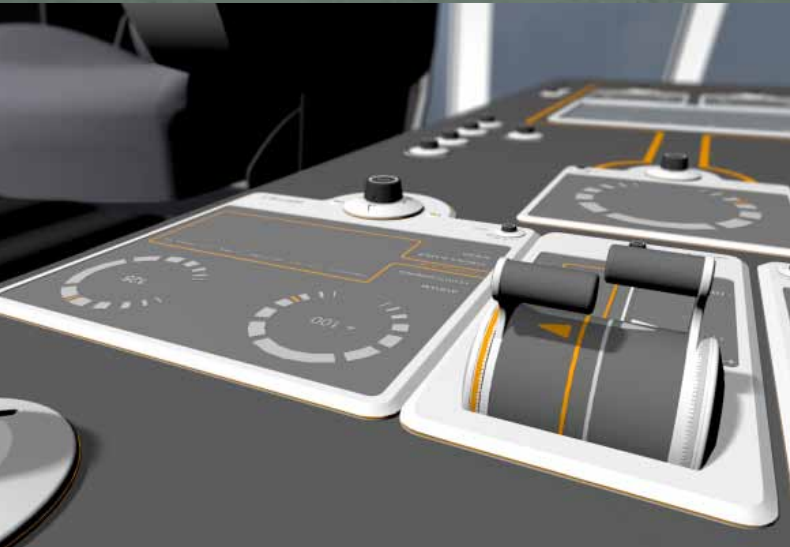
Two 2 men cabins

One galley

One combined mess room and day room

One wardrobe deck (fwd ER) incl. laundry room, lockers and toilet as shown on GA plan.





E-mail for info: shipdesign.norway@wartsila.com

WÄRTSILÄ® is a registered trademark. Copyright © 2010 Wärtsilä Corporation.



WARTSILA.COM