

ENERGY
ENVIRONMENT
ECONOMY

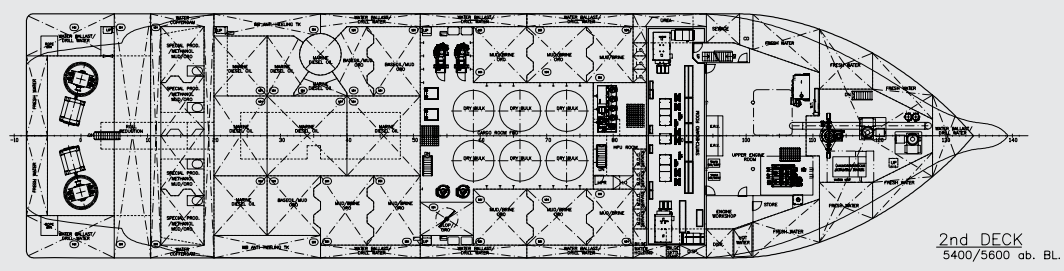
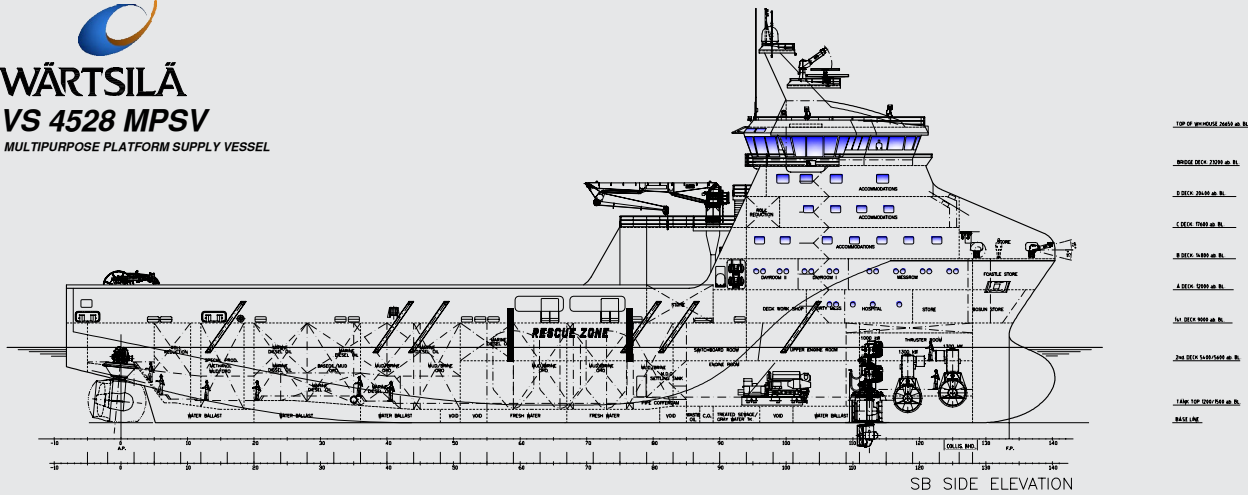


MAIN DATA

Length over all 89.10 m
Cargo area..... 1040 m²

MULTIPURPOSE PLATFORM SUPPLY VESSEL

- Oilrecovery
- Standby
- Fire Fighting II
- ERN 99.99.99.99
- Prepared for removable Cargo Rail
(PS forward from crane foundation)



MAIN DIMENSIONS

Length over all	89.10 m
Length between p.p.	80.10 m
Breadth moulded	22.00 m
Depth to 1st Deck	9.00 m

CAPACITIES

Deadweight @ 7.1 mean draught	5300 tonnes
Fuel oil	approx 1400 m ³
Fresh water	approx 800 m ³
Dry bulk	approx 330 m ³
Liquid mud	approx 2300 m ³
Brine	approx 1500 m ³
Base oil	approx 500 m ³
Methanol/Special products	approx 300 m ³
ORO total	2000 m ³

CLASS

DNV *1A1, SPS, Standby Vessel(S), Offshore Vessel + Supply, LFL*, ICE 1A, BIS, Clean Design, DEICE, Dynpos-Autr, E0, Fire Fighter II, Naut-Osv (A), Recyclable, COMF-V(3) & C(3), Dk(10t/m2 stern to # 89), hl (2.8t/m3), Oilrec, SF.

SPEED

Speed	15 knots
-------	----------

MACHINERY AND PROPULSION

Main engines: W 6L26	4 x 1950 kW
Tunnel thrusters fwd: W FT225	2 x 1300 kW
Retractable thruster fwd: FS175	1 x 1000 kW
Main propulsion: Steerprop SP50D	2 x 3000 kW

ACCOMMODATION

The vessel is built with a compliment for totally 60 persons

DECK EQUIPMENT

Deck crane: 5t @ 15m

REFERENCE

Owner	TBA
Shipyard	TBA
Design ID	VS 4528 MPSV
Reference number	4999
E-mail for info	shipdesign@wartsila.com
Details are believed to be correct but not guaranteed	