

ENERGY
ENVIRONMENT
ECONOMY

WSD50 20K
20,000 M³ LNG CARRIER, TYPE 2G



TECHNICAL SPECIFICATION

Length over all, approx. 147.25 m
Deadweight, max. 12,500 DWT
Gross Tonnage 17,270 GT
Net Tonnage 5,180 NT

Design Speed 15.0 knots
Operation "Worldwide"

Main engine..... 2-stroke Wärtsilä
1 x 5,950 kW 5RT-Flex50DF

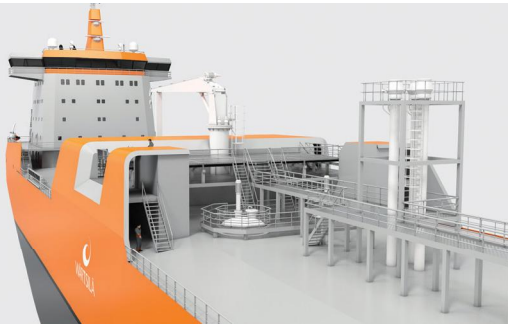
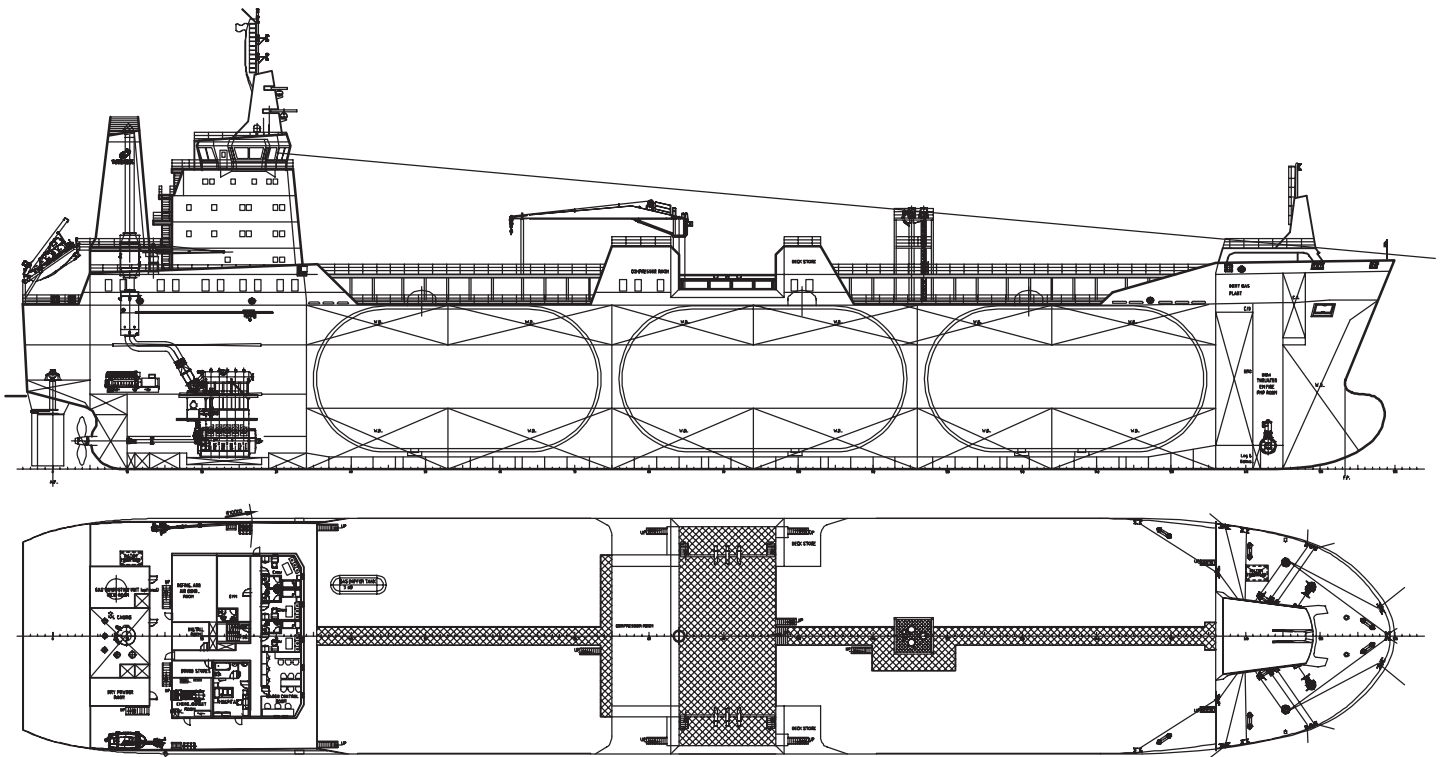
Cargo capacity(100%) 20,000 m³

Daily fuel oil cons. (LNG)
Design draught, 18.1 t

DESIGN HIGHLIGHTS

- Latest technology Dual Fuel Engines to operate on LNG in ECA zones (IMO Tier III) and MDO outside at competitive fuel cost
- Single decked with machinery and accommodation located aft
- Single screw propulsion with low speed DF main engine
- Ballast water treatment plant compliant with the latest MARPOL V
- Sewage and garbage handling fully compliant with MARPOL IV/V
- Superior hull lines, CFD optimized
- Low fuel consumption, high propulsive efficiency
- 2 x 7,500 m³ Bilobe and 1 x 5,000 m³ Bilobe type C cargo tank
- Pure LNG carrier
- Fuel feeding by BOG and forced vaporizing
- Joint Design Project with Lloyd's Register





MAIN DIMENSIONS

Length over all, approx.	147.25 m
Length PP	138.70 m
Breadth moulded	25.30 m
Depth moulded	17.60 m
Draught	7.80 m
Deadweight (T= 7.8m)	12,500 t

SERVICE SPEED

Speed (T= 7.8m)	15.0 knots
-----------------------	------------

CAPACITIES

HFO capacity	800 m ³
FW capacity.....	200 m ³
Endurance (FO).....	10,800 nm

CARGO EQUIPMENT

- Deepwell pumps
- Cargo heating/vaporising equipment
- Nitrogen generator unit
- Reliquefaction unit for LNG (Option)
- Gas combustion unit (Option)
- Elevated manifold (Option)

ENVIRONMENTAL EQUIPMENT

- B.W.T. unit, Wärtsilä AQ-550-EC
- Sewage and garbage treatment

ESDs

- Energo ProFin
- Mewis Duct (or equivalent)

DECK'S MACHINERY

- 2 x combined anchor/mooring winches fwd and 2 x mooring winches aft, all auto-tension
- El.-hydr. steering gear for flap rudder
- 1 x el.-hydr. hose crane
- Free fall lifeboats for 24 persons
- Life rafts for 24 persons
- Life raft for 6 persons

MACHINERY

Main engine (5RT Flex 50DF)	5,950 kW
Generator sets (6L20DF)	3 x 1,065 kW
Emerg. generator	1 x 150 kW
Bow thrusters (CT-200H).....	1 x 813 kW
Propeller.....	1 x FPP, dia. 5,200 mm

E-PLANT 230 V/450 V

Power	450 V, 60 Hz
Lighting	230 V, 60 Hz
Automation	230 V, 60 Hz / 24VDC

ACCOMMODATION

24 persons full HVAC in single cabins

CLASSIFICATION

LR +100A1 liquefied gas carrier, Ship type 2G, Methane(LNG) in independent tanks Type C, Maximum specific gravity 0.5, Maximum vapour pressure 4.0bar, Minimum cargo temperature minus 163°C, ShipRight ACS(B), *IWS, LI, ECO, +LMC, IGS, UMS, PMRL, NAV1, +Lloyd's RMC (LG)** with descriptive notes, ShipRight(BWMP(T), SCM, SERS), ETA

**Optional

Or equivalent

WÄRTSILÄ® is a registered trademark. Copyright © 2015 Wärtsilä Corporation. Specifications are subject to change without prior notice.

shipdesign@wartsila.com

WARTSILA.COM

