

WSD80 1400

1400TEU Container Feeder

DATASHEET



Design highlights

- Wärtsilä integrated solution
- Latest dual fuel main engine technology
- Superior hull lines, CFD optimized
- Low fuel consumption, high propulsive efficiency
- High homogeneous container intake
- Reduced emissions in LNG operation: SO_x (100%), CO₂ (20%), NO_x (80%)
- LNG tanks arr't allows for conversion to/from LNG operation and efficient utilisation of cargo area
- Economical and friendly operation
- Flexible container stowage
- Ballast Water Treatment Plant compliant with the latest MARPOL V
- Latest rules and regulations for container feeder
- Comply with EEDI Phase 3 acc. to MEPC.203(62)
- Approval in principle verified by Lloyd's Register

SPECIFICATION IN BRIEF

Length over all, approx.	162.9 m
Deadweight, max	19,900 DWT
Gross tonnage	16,800 GT
Net tonnage	5,000 NT

Design speed	18.0 knots
Operation area	"Worldwide"

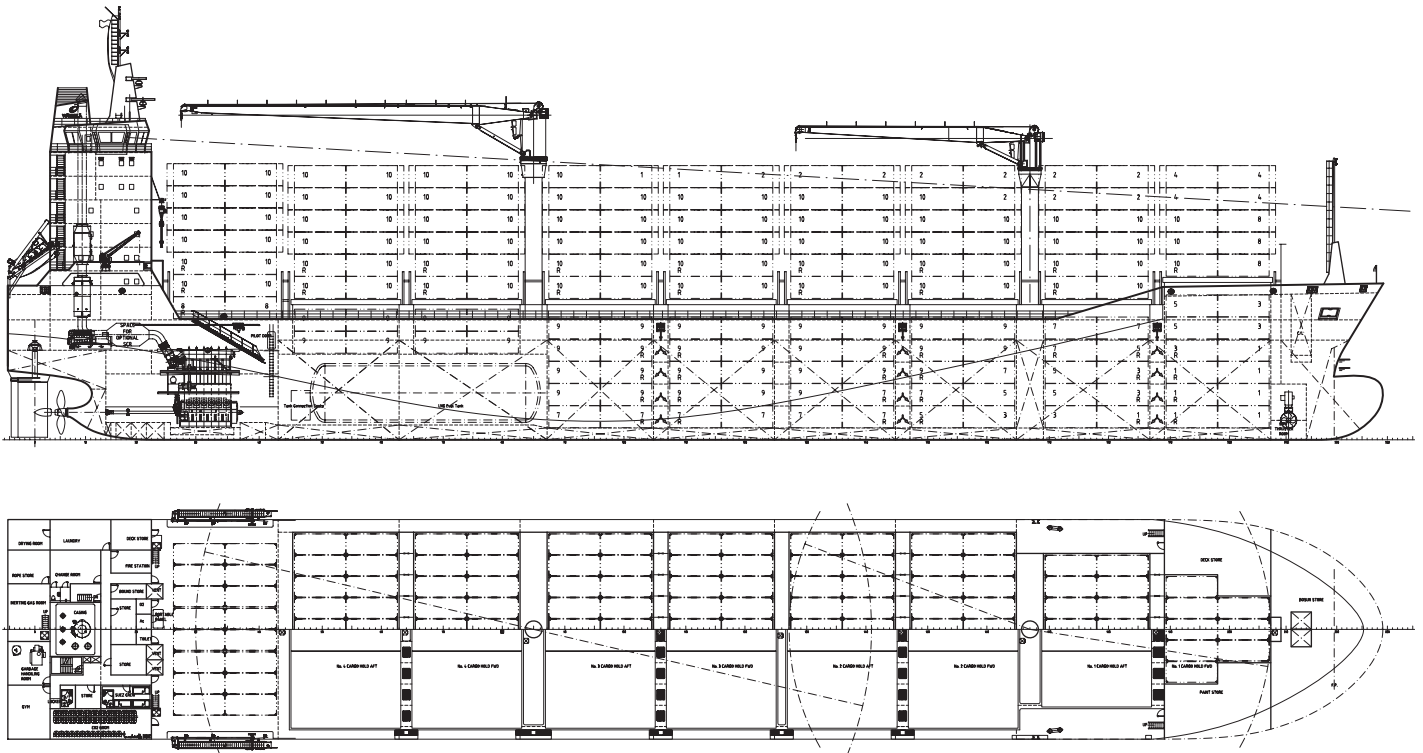
Main engine	2-stroke Wärtsilä 1 x 10,080 kW 7RT-flex50 DF
-------------	---

Container capacity	1,420 TEU
Reefer capacity	334 FEU

ME daily fuel gas cons.	
Design draught, approx.	29.0 t



Fig.1 Detailed elevation drawings



TECHNICAL SPECIFICATION

MAIN DIMENSIONS

Length over all, approx.	162.90 m
Length PP	153.85 m
Breadth moulded	26.00 m
Depth to main deck	14.20 m
Draught, design	8.50 m
Draught, scantling	9.50 m
Deadweight (T= 9.50 m)	19,900 t

SERVICE SPEED & ENDURANCE

Max. Speed	18.7 knots
Service Speed	18.0 knots
Eco Speed	16.0 knots
Endurance (MDO), approx	9,600 nm
Endurance (LNG), approx	8,800 nm
(service speed, design draught, with 15% SM)	

TANK CAPACITY

LNG capacity, approx.	1,600 m ³
MDO capacity, approx.	1,140 m ³
FW capacity, approx.	350 m ³
Ballast capacity approx.	9,100 m ³

STACK WEIGHT

Hatch cover 20'/40'/45'	70t/105 t
Main deck 20'/40'/45'	70t/105 t
In holds 20'/40'/45'	150t/180 t

CONTAINER CAPACITY

Container position	
On Deck	948 TEU
In Hold	472 TEU
Total	1,420 TEU
Reefer plug position	
(on deck/in hold)	176/158 FEU

Dangerous cargos in all of cargo holds

Container intake at Design draught	
HOMO 11t/TEU	1,064 TEU
HOMO 14t/TEU	914 TEU

Container intake at Scantling draught	
HOMO 11t/TEU	1,164 TEU
HOMO 14t/TEU	1,024 TEU

Based on ISO standard container, a rel. VCG of 45%

E-PLANT 230 V/450 V

Power	450 V, 60 Hz
Lighting	230 V, 60 Hz
Automation	230 V, 60 Hz / 24 VDC

MACHINERY

Main engine (7RT-flex50 D), MCR	10,080 kW
NCR (85% MCR)	8,560 kW
Generator sets... 2 x 1,420 kW + 2 x 1,065 kW	
Emerg. generator..... ..	1 x 150 kW
Bow thrusters..... ..	1 x 1,081 kW
Propeller..... ..	1 x FPP, dia. 5,900 mm

LNG FUEL CONSUMPTION, DESIGN DRAUGHT

Service speed, no reefers	31.5 t/day
Service speed, all reefers	42.7 t/day
Eco speed, all reefers	32.4 t/day

PERFORMANCE, SERVICE SPEED, SCANTLING DRAFT

ME FGC 14t/TEU [g/TEU/nm]..... ..	67.4
ME FGC 11t/TEU [g/TEU/nm]..... ..	59.3

ACCOMMODATION

24 persons full HVAC in single cabins plus one Suez Crew cabin for 6 Suez

CLASSIFICATION

LR +100A1, Container Ship, ShipRight (ACS(B)), *IWS, LI, BoxMax(V,W), ECO(BWT, EEDI-3, IHM),+LMC, UMS, NAV1, GF with descriptive notes: ShipRight(BWMP(T), SERS, SCM), CSA"

Or equivalent