

## WSD80 1500 1500TEU CONTAINER FEEDER



### TECHNICAL SPECIFICATION

Length over all, approx..... 162.9 m  
 Deadweight, max..... 20,500 DWT  
 Gross Tonnage ..... 16,800 GT  
 Net Tonnage ..... 6,100 NT

Design Speed ..... 18.0 knots  
 Operation ..... "Worldwide"

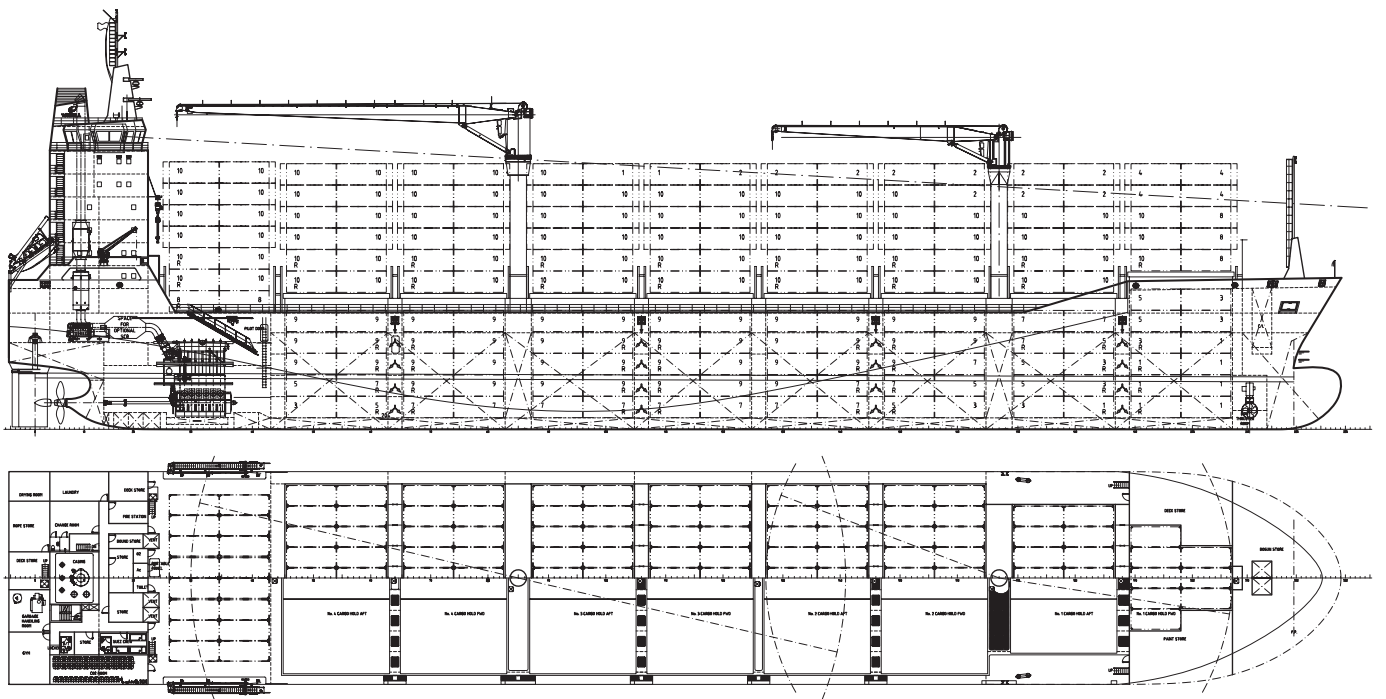
Main engine..... 2-stroke Wärtsilä  
 1 x 10,470 kW 6RT- flex50 D

Container capacity .....1,508 TEU  
 Reefer capacity.....376 FEU

ME Daily fuel oil cons.  
 Design draught, approx..... 33.7 t

### DESIGN HIGHLIGHTS

- Wärtsilä integrated solution
- Spaces for SCR & Scrubber reserved
- Superior hull lines, CFD optimized
- Low fuel oil consumption, high propulsive efficiency
- High homogeneous container intake
- Economical and friendly operation
- Flexible container stowage
- Ballast Water Treatment Plant compliant with the latest MARPOL V
- Latest rules and regulations for container feeder
- Comply with EEDI Phase 2 acc. to MEPC.203(62)



### MAIN DIMENSIONS

Length over all, approx. ....	162.90 m
Length PP .....	153.85 m
Breadth moulded .....	26.00 m
Depth to main deck .....	14.20 m
Draught, design .....	8.50 m
Draught, scantling .....	9.50 m
Deadweight (T= 9.50 m) .....	20,500 t

### SERVICE SPEED & ENDURANCE

Max. Speed .....	18.85 knots
Service Speed.....	18.0 knots
Endurance, approx .....	16,700 nm
(service speed, design draught, with 15% SM)	

### TANK CAPACITY

HFO capacity, approx. ....	1,550 m <sup>3</sup>
MDO capacity, approx. ....	340 m <sup>3</sup>
FW capacity, approx. ....	350 m <sup>3</sup>
Ballast capacity approx. ....	9,100 m <sup>3</sup>

### STACK WEIGHT

Hatch cover 20'40'/45' .....	70t/105 t
Main deck 20'40'/45' .....	70t/105 t
In holds 20'40'/45' .....	150t/180 t

### CONTAINER CAPACITY

Container position	
On Deck (6 tiers) .....	948 TEU
In Hold .....	560 TEU
Total .....	1,508 TEU

Reefer plug position (on deck/in hold) .....	176/200 FEU
-------------------------------------------------	-------------

Dangerous cargos in Cargo hold 1

Container intake at Design draught	
HOMO 11t/TEU.....	1,142 TEU
HOMO 14t/TEU .....	1,002 TEU

Container intake at Scantling draught	
HOMO 11t/TEU .....	1,212 TEU
HOMO 14t/TEU .....	1,002 TEU

Based on ISO standard container, a rel. VCG of 45%

### E-PLANT 230 V/450 V

Power .....	450 V, 60 Hz
Lighting .....	230 V, 60 Hz
Automation .....	230 V, 60 Hz / 24 VDC

### MACHINERY

Main engine (6RT-flex50 D), MCR .....	10,470 kW
NCR (82% MCR) .....	8,560 kW
Generator sets .... 2 x 1,405 kWe x 2 x 1,005 kWe	
Emerg. generator .....	1 x 150 kWe
Bow thrusters .....	1 x 1,081 kW
Propeller.....	1 x FPP, dia. 5,900 mm

### FUEL CONSUMPTION, DESIGN DRAUGHT

Service speed, no reefers .....	36.7 t/day
Service speed, all reefers .....	48.5 t/day

### PERFORMANCE, SERVICE SPEED, SCANTLING DRAFT

ME FOC 14t/TEU [g/TEU/nm] .....	80.5
ME FOC 11t/TEU [g/TEU/nm] .....	73.7

### ACCOMMODATION

24 persons full HVAC in single cabins plus one Suez Crew cabin for 6 Suez

### CLASSIFICATION

LR +100A1, Container Ship, ShipRight (ACS(B)), \*IWS, LI, BoxMax(V,W), ECO(BWT, EEDI-2, IHM), +LMC, UMS, NAV1, with descriptive notes: ShipRight(BWMP(T), SERS, SCM), CSA"

Or equivalent

WÄRTSILÄ® is a registered trademark. Copyright © 2015 Wärtsilä Corporation. Specifications are subject to change without prior notice.

shipdesign@wartsila.com

