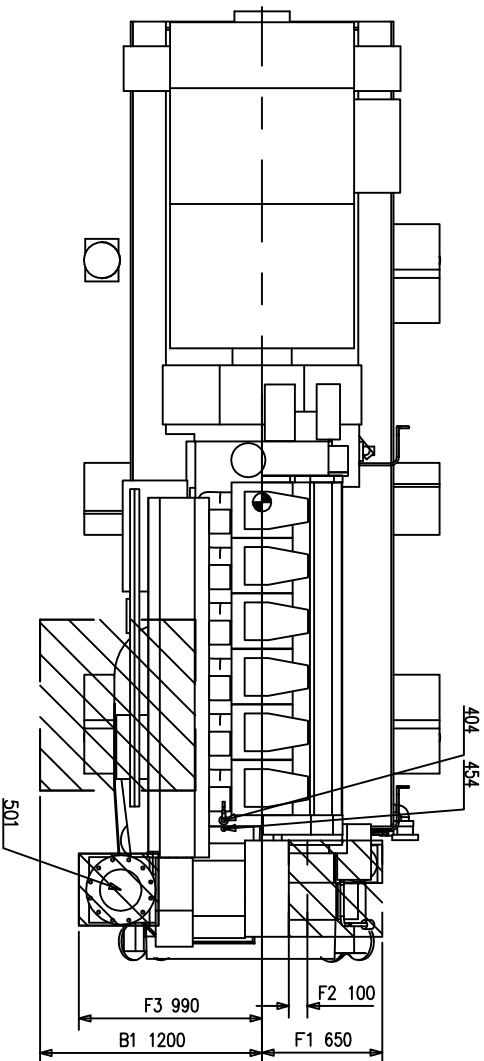


☉ CENTER OF GRAVITY
* = Optional
(b).OPTIONAL # NA IF 221 INCLUDED
DIESEL ENGINE (DRY WEIGHT) W6L20 : 16800 Kg



- E1. Distance needed to dismantle water box cover: 750mm
- F1. The recommended axial clearance for dismantling and assembly of silencers: 4L: 590mm, 6L: 650mm, 8L, 9L: 750mm
- F2. Minimum axial clearance is 100mm
- F3. Recommended distance for dismantling the gas outlet elbow: 4L: 890mm, 6L: 990mm, 8L, 9L: 1120mm.
- H1. Distance needed for dismantling lube plate cooler: 1050mm
- I1. Camshaft overhaul distance(free end): 4L: 700mm, 6L: 1000mm, 8L, 9L: 1300mm
- I2. Camshaft overhaul distance(flywheel end): 4L: 700mm, 6L: 1000mm, 8L, 9L: 1300mm
- K1. Service space for generator: 500mm

This drawing is the property of Murtaslie Finland Oy and shall not be copied, shown or communicated to a third party without the consent of the owner of the work.