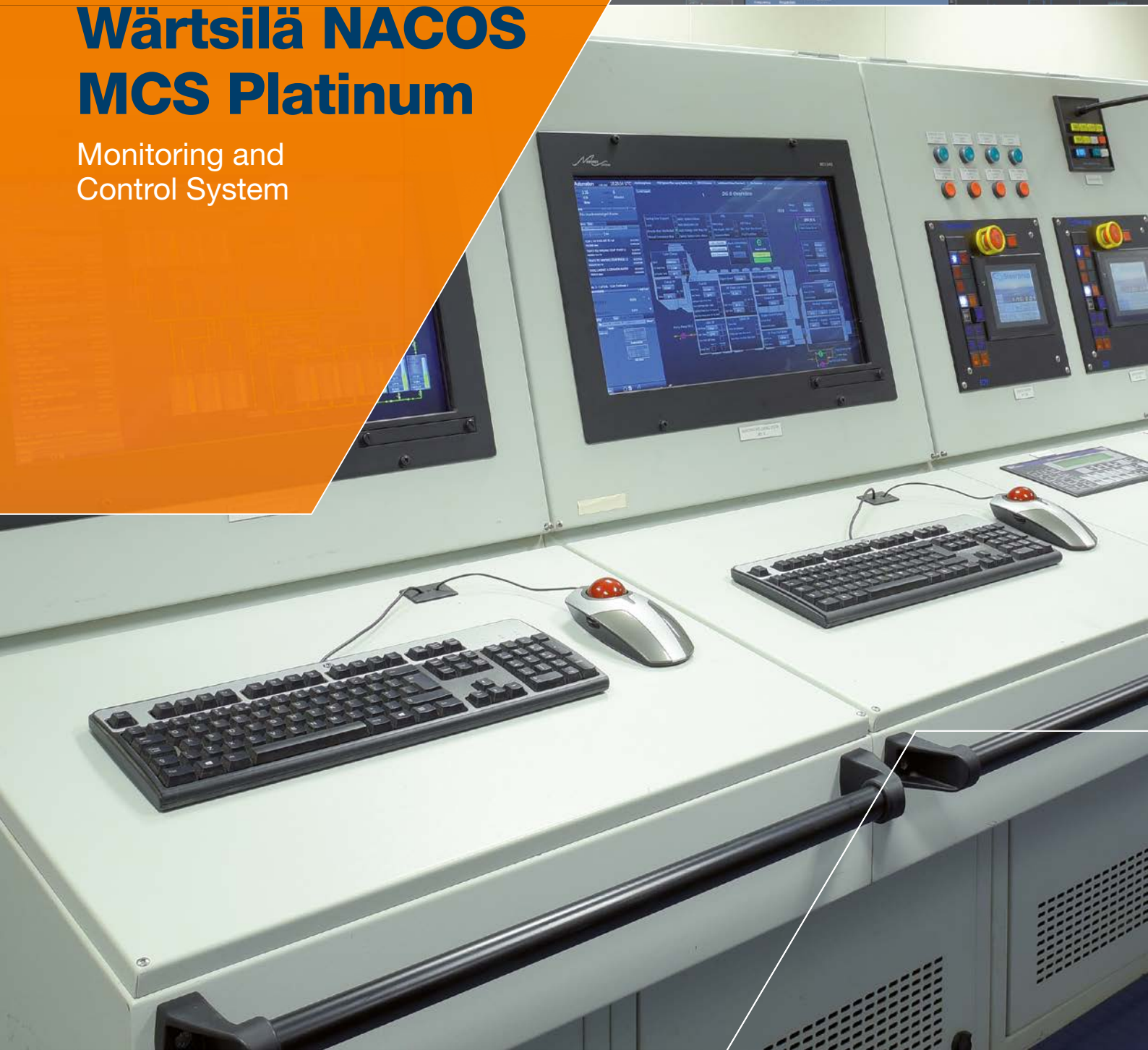


Wärtsilä NACOS MCS Platinum

Monitoring and
Control System



Wärtsilä NACOS MCS Platinum Monitoring and Control System

The Wärtsilä NACOS MCS Platinum monitoring and control system is designed to improve ship operations through increased safety and reliability. MCS Platinum builds upon decades of design and engineering experience and expertise in ship alarm and control systems. This depth of know-how provides the highest levels of quality and reliability, with unprecedented user-friendliness that benefits both experienced and novice crew members.

All standard marine application alarm and control functions are supported by highly standardized proven and tested modules, including power management, anti-heeling, valve control, pump control, advanced monitoring with deviation alarms, exhaust gas temperatures and much, much more. Continuous operations are guaranteed with extensive online diagnostics, support for onboard crew maintenance, and remote diagnosis. The unique user friendly ergonomic design reduces the mental load for operators, decreases risk of alarm misinterpretations, and minimizes necessary system handling.

User Centred Design

With its vast experience in the development of ship automation and control systems dating back to the 1950s, Wärtsilä has partnered with leading international research institutes to offer the most innovative, user-friendly and comprehensive family of navigation and automation technologies.

The HMI is designed around the same operating principles commonly found in well-known software programmes, thus improving operating system familiarization speed to levels never seen before.

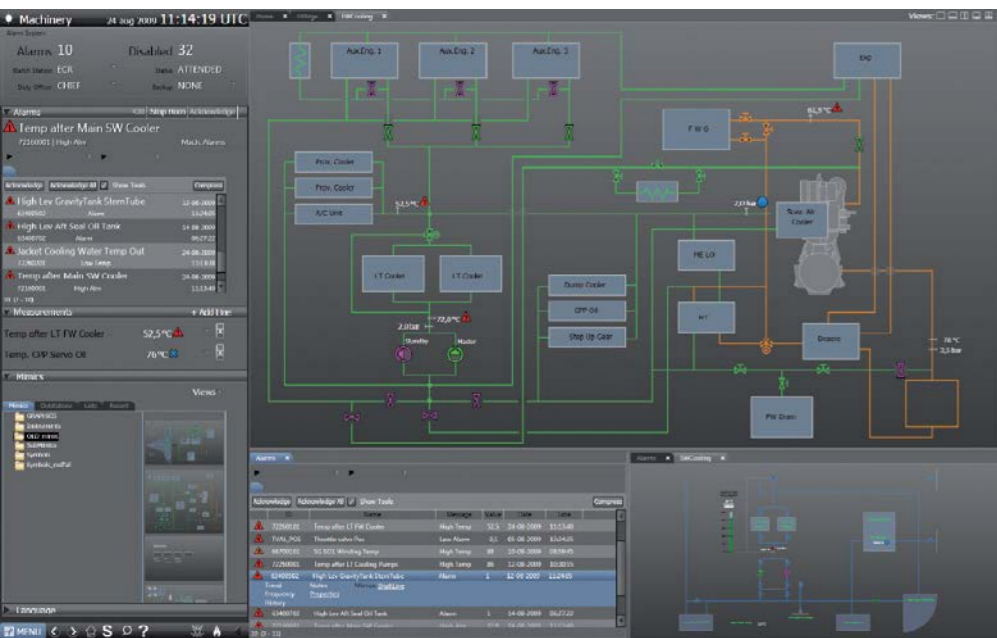
Features and Options

Features

- High resolution graphics and modern software design
- Wide selection of high resolution displays
- Operator panels for console/bulkhead mounting
- Field station for process IOs in a variety of sizes
- Process IOs and controllers integrable into switchboards, bridge consoles etc.
- Alarm/log/event printer (dot-matrix)
- Graphical printer for reports/graphs trending
- Type approved by major class societies within IACS
- Duty alarm system, engineer call system
- Bridge watch alarm system including navigator fitness check according to MSC.128(75)
- Standard interfaces/protocols by RS485/RS422 to all major marine suppliers
- Stand-alone or integrated with other Platinum series products
- Redundant LAN network or fieldbus for long distance
- Hot standby for process controller

Options

- Cargo Monitoring System (CMS)
- Power Management System (PMS)
- Emergency Shut Down system (ESD)
- Remote maintenance function
- Complete integration of EMS, ECS, EPS, ballast water management, anti-heeling system, fire detection system, dedicated ship-specific functions



Cooling water system display

System Architecture

A redundant LAN network tying together the control and operator systems is at the heart of the MCS Platinum system. The networked system is highly scalable and offers superb flexibility to optimize safety and redundancy, as well as cost effectiveness. Whether a small scale alarm system or complete integration of the navigation and automation systems, the MCS Platinum will fit perfectly onboard your vessel. All critical components, IO and controllers utilized in the system are the proprietary of Wärtsilä, thus ensuring long-term through life support and the safeguarding of your investment.

Software Platform

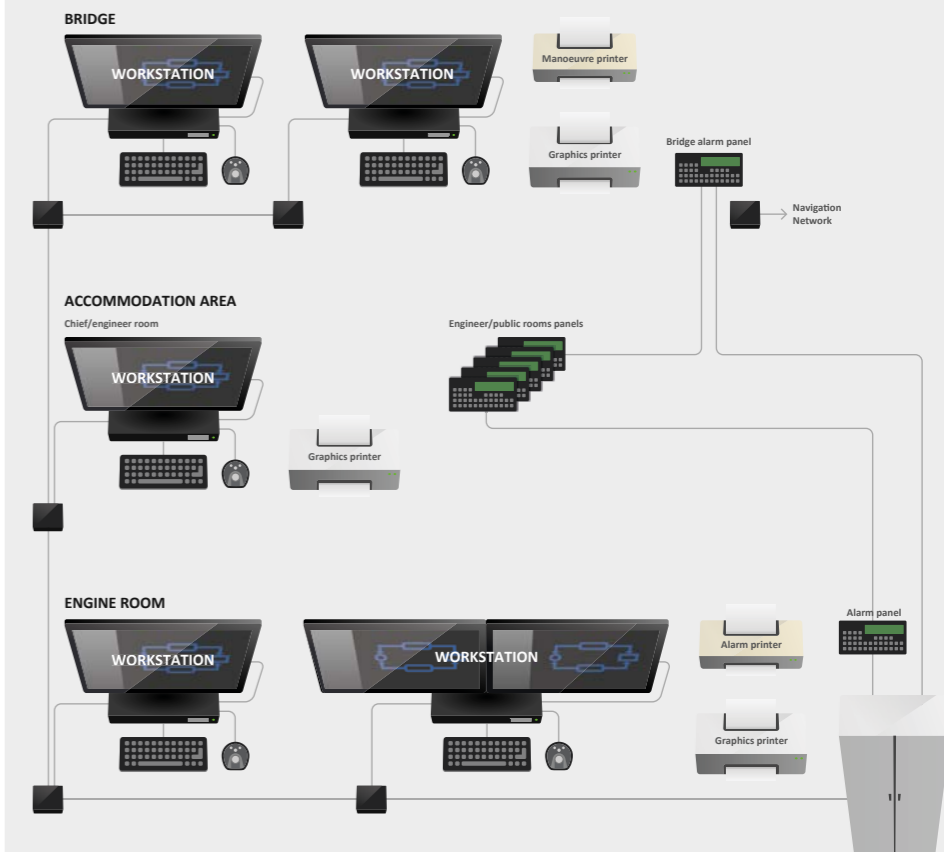
The Platinum series offers solutions far beyond the competition. Common navigation and automation platform software allows the installation of any application to any Platinum series work station, including running ECDIS navigational applications in the ECR or providing MCS functionality to the bridge.

Standard Function Blocks

MCS Platinum provides a vast library of function blocks. With the standard function block, we provide a well proven certified programming code to control respective marine equipment. Our library includes variants of valve controls, generator controls, PID loop controllers and much, much more. Through utilizing highly standardized and well documented components, system quality and reliability, together with the best value for money, are all guaranteed.

Benefits

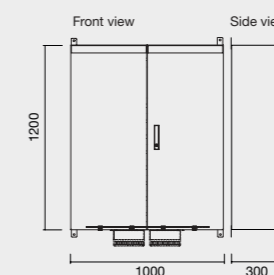
- Extremely user friendly
- Easy to install/commission
- Online diagnostics for crew maintenance
- Wide range of standard functions
- Scalable from small stand-alone systems to large integrated systems
- Long lifetime and huge customer base



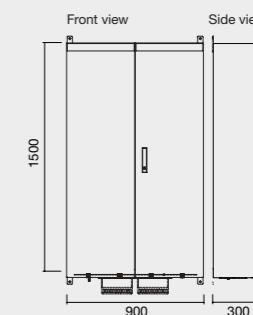
MCS Platinum system configuration

Technical data

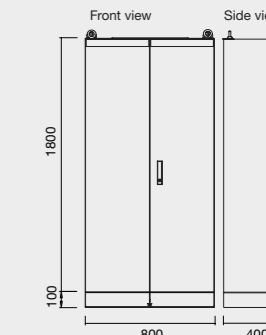
MCS outstation (wall mount)



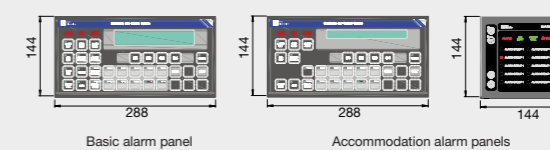
MCS outstation (wall mount)



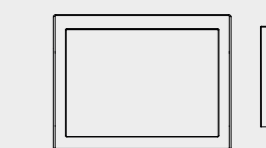
MCS outstation (floor mount)



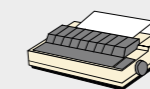
Operator panels for duty alarm system



22" / 26" TFT console mounted



Printer



Alarm/event printer



Graphics laser printer

HP computer + marine kit



HP computer + marine kit



Wärtsilä is a global leader in complete lifecycle power solutions for the marine and energy markets. By emphasising technological innovation and total efficiency, Wärtsilä maximises the environmental and economic performance of the vessels and power plants of its customers.

anc.sam.de@wartsila.com

www.wartsila.com

WÄRTSILÄ® is a registered trademark. Copyright © 2016 Wärtsilä Corporation. Specifications are subject to change without prior notice.